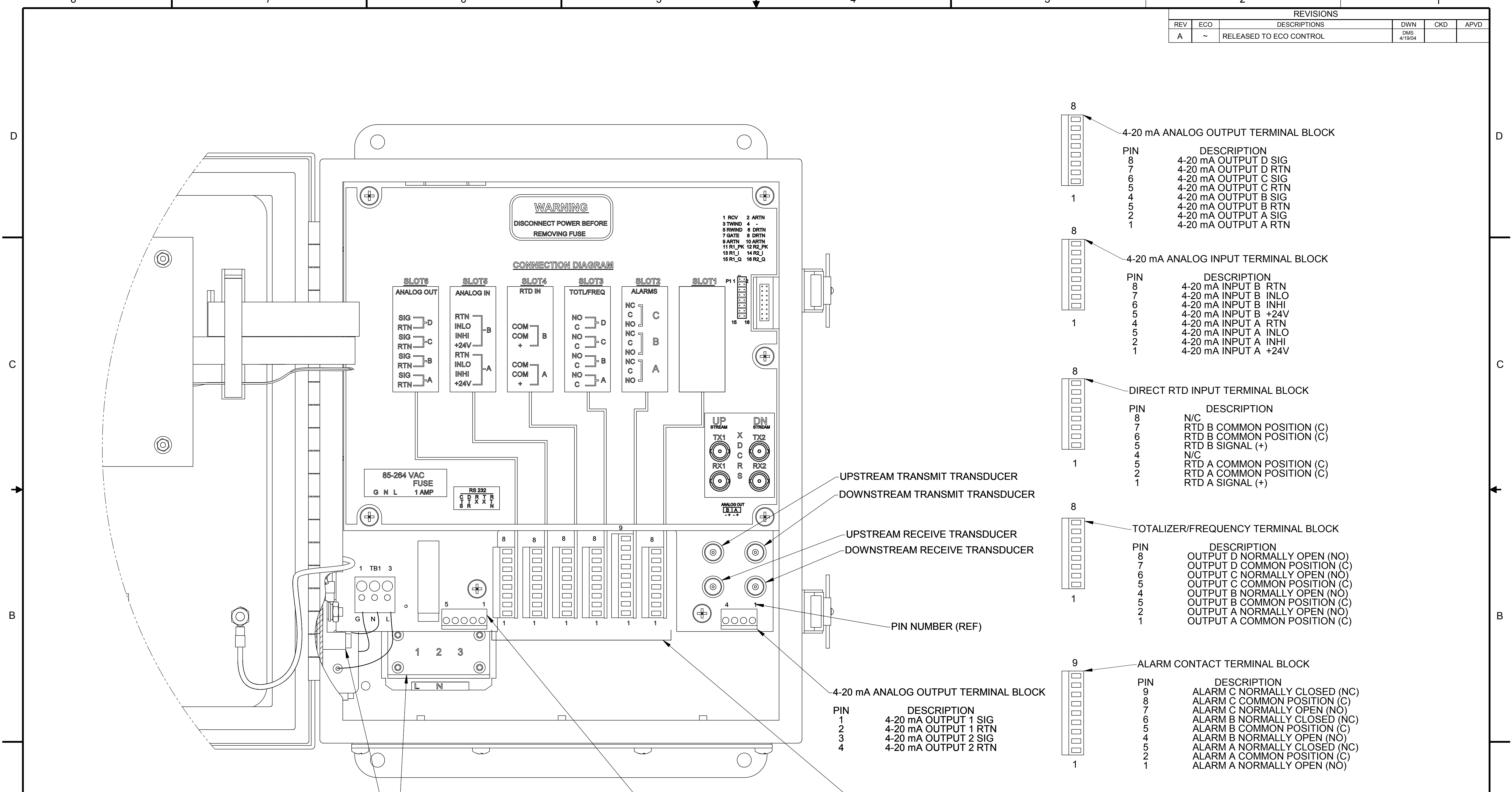


REVISIONS					
REV	ECO	DESCRIPTIONS	DWN	CKD	APVD
A	~	RELEASED TO ECO CONTROL	DMS 4/19/04		



4-20 mA ANALOG OUTPUT TERMINAL BLOCK

PIN	DESCRIPTION
8	4-20 mA OUTPUT D SIG
7	4-20 mA OUTPUT D RTN
6	4-20 mA OUTPUT C SIG
5	4-20 mA OUTPUT C RTN
4	4-20 mA OUTPUT B SIG
5	4-20 mA OUTPUT B RTN
2	4-20 mA OUTPUT A SIG
1	4-20 mA OUTPUT A RTN

4-20 mA ANALOG INPUT TERMINAL BLOCK

PIN	DESCRIPTION
8	4-20 mA INPUT B RTN
7	4-20 mA INPUT B INLO
6	4-20 mA INPUT B INHI
5	4-20 mA INPUT B +24V
4	4-20 mA INPUT A RTN
5	4-20 mA INPUT A INLO
2	4-20 mA INPUT A INHI
1	4-20 mA INPUT A +24V

DIRECT RTD INPUT TERMINAL BLOCK

PIN	DESCRIPTION
8	N/C
7	RTD B COMMON POSITION (C)
6	RTD B COMMON POSITION (C)
5	RTD B SIGNAL (+)
4	N/C
2	RTD A COMMON POSITION (C)
1	RTD A COMMON POSITION (C)
1	RTD A SIGNAL (+)

TOTALIZER/FREQUENCY TERMINAL BLOCK

PIN	DESCRIPTION
8	OUTPUT D NORMALLY OPEN (NO)
7	OUTPUT D COMMON POSITION (C)
6	OUTPUT C NORMALLY OPEN (NO)
5	OUTPUT C COMMON POSITION (C)
4	OUTPUT B NORMALLY OPEN (NO)
5	OUTPUT B COMMON POSITION (C)
2	OUTPUT A NORMALLY OPEN (NO)
1	OUTPUT A COMMON POSITION (C)

ALARM CONTACT TERMINAL BLOCK

PIN	DESCRIPTION
9	ALARM C NORMALLY CLOSED (NC)
8	ALARM C COMMON POSITION (C)
7	ALARM C NORMALLY OPEN (NO)
6	ALARM B NORMALLY CLOSED (NC)
5	ALARM B COMMON POSITION (C)
4	ALARM B NORMALLY OPEN (NO)
5	ALARM A NORMALLY CLOSED (NC)
2	ALARM A COMMON POSITION (C)
1	ALARM A NORMALLY OPEN (NO)

DETAIL A - OPTIONS

UNLESS OTHERWISE SPECIFIED DIMENSIONS ARE IN INCHES TOLERANCES ARE FRACTIONS DECIMALS ANGLES SURFACE FINISH		THIRD ANGLE PROJECTION		TITLE	
±	XX ±	±	±	85-264 VAC UNIVERSAL WIRING DIAGRAM, CTF878	
±	.XXX ±	✓	✓	DRAWN: D. JOYCE 10/28/02 APP'D: J. TRUE 11/6/02	
±	±	±	±	CHECKED: E. MACHADO 11/6/02 SALES: N/A	
COPYRIGHT 1997 GENERAL ELECTRIC CO.		CERT: N/A		SIZE: D	
PROPRIETARY INFORMATION - THIS DRAWING CONTAINS PROPRIETARY INFORMATION OF GENERAL ELECTRIC CO. AND MAY NOT BE REPRODUCED OR DISCLOSED TO OTHERS, EXCEPT WITH THE WRITTEN PERMISSION OF GENERAL ELECTRIC CO.		MODEL NO. CTF878		DRAWING NUMBER: 702-508	
		SCALE: 1:1		REV: A	
		DO NOT SCALE DWG		SHEET 1 OF 1	